



Summer Camps 2025

Summer Camp Registration:
Resident: February 19
Non-Resident: March 19

Town of 
Newmarket
camps

Recreation & Culture
newmarket.ca/camps

Mayor & Council



Members of Council at Mulock Harvest Picnic in 2019

Message from the Mayor

Newmarket's camps are a great way to make summer even better.

This season, we have a wide offering of camps for those aged 4 to 19. From science and technology, to sports, computer science and coding, leadership development to visual arts, there is no shortage of camps to keep children engaged and active over the summer.

Newmarket camps provide an opportunity for your child to learn, grow and develop in a safe and welcoming environment. They will make new friends, create lasting lifelong memories filled with fun adventures in Newmarket.

Flip through the guide to see what peaks your child's interest. Mark your calendar: Registration for residents begins on Wednesday, February 19 at 6:30 a.m.

Get ready to soak up the sun and we will see your youth at a summer camp this season.

John Taylor
Mayor



Important Dates

REGISTRATION DATES

Resident Registration

Wednesday, February 19 at 6:30 a.m.

Non-Resident Registration

Wednesday, March 19 at 6:30 a.m.

Summer Camp 2025

	Mon	Tue	Wed	Thu	Fri
Week 1	30	1	2	3	4
Week 2	7	8	9	10	11
Week 3	14	15	16	17	18
Week 4	21	22	23	24	25
Week 5	28	29	30	31	1
Week 6	4	5	6	7	8
Week 7	11	12	13	14	15
Week 8	18	19	20	21	22
Week 9	25	26	27	28	29

● June ● July ● August ● Holiday



How to Register

ONLINE

It's easy, secure and the fastest way to register for a program!

What You Need:

- Xplor account login (reset via "Forgot Password" if needed).
- Visa, Mastercard, AMEX, or account credit.
- Camp ID.
- Camper Information:
- Emergency contact name & phone.
- Camper details (disabilities, accommodations, medical conditions, dietary restrictions, or allergies).

What to do:

Log in to **newmarket.perfectmind.com**.

1. Go to the Activity tab and click Registration.
2. Use filters or enter the camp ID in the Keyword search bar, or scroll to the Summer Camps box to browse categories.
3. Select Register or Waitlist, depending on availability.
4. Complete the Camper Information Questionnaire (once per registration) with as much detail as possible.
5. Enter your payment details.
6. Print your confirmation and receipt.
7. View your activities under the Schedule section of your account.

NON-RESIDENTS

Non-Residents will be charged an additional \$30.00 fee for each camp

IN-PERSON

What You Need:

- Xplor account info.
- Payment method (cash, cheque, debit, Visa, Mastercard, AMEX, or account credit).
- Camp ID or name.
- Camper Information:
- Emergency contact name & phone.
- Camper details (disabilities, accommodations, medical conditions, dietary restrictions, or allergies).

What to do:

Visit one of our Customer Service Kiosks* during business hours. This registration method reduces your chances of getting into the programs of your choice as programs fill up quickly.

REMINDERS

The date range filter is automatically set to only show camps that fall within the next 6 months. Please adjust your filter until the end of August to ensure you don't miss out on the camps running during the last 3 weeks of the summer!

If you experience trouble, call the Help Line at 905-953-5154.

Registration closes at 11:59 p.m. on the Thursday prior to the camp start date.

Due to volume of users on registration day, delays in accessing online registration may occur.

*Customer Service Kiosks: Ray Twinney Recreation Complex, Municipal Offices, Magna Centre, Newmarket Seniors' Meeting Place, Recreation Youth Centre & telMAX Indoor Skate Park.

Things You Should Know Before Starting Summer Camp

CONTACT INFORMATION

Camp Central:

905-953-5300 ext. 2825 or 2826
camps@newmarket.ca
Phone lines open May 12, 2025

Inclusion & Support Services:

905-953-5300 ext. 2821
inclusion@newmarket.ca

CAMPER PAPERWORK

- Weekly Activity Forecasts.
- Medical Forms.
- Safe Dismissal Consent Form (submit weekly to Camp Director).
- What to Bring Checklist.
- A welcome email outlining the above will be sent the Friday prior to each camp week.

REFUND POLICY

- **7+ days before camp:** Full refund.
- **6 days or less:** No refunds without medical documentation.
- No refunds after camp ends.

SAFE DISMISSAL PROCEDURES

- Authorized individuals must sign campers in/out daily. **Photo ID required.**
- Only those on the Safe Dismissal Consent Form (SDC) can sign out campers.
- Campers under 9 should be signed out by an authorized adult.
- Written consent is required for early or self-sign-out.

LATE FEE POLICY

- \$2.00 per 5 minutes late.
- Fees payable within 48 hours online or at a Customer Service Desk to return to camp

ABSENT & MEDICATIONS

- Notify Camp Central if your camper will be absent or late.
- Medications (e.g., epi-pens) must be in original packaging with dosage and self-administered by the camper. Submit medical forms to the Camp Director with time of administration indicated.

NUT-FREE POLICY

- No food containing nuts/peanuts or soy butter. Prohibited items will be returned at pick-up.


CAMPER BEHAVIOUR

Campers must:

- Respect others and follow staff instructions.
- Use kind language and keep hands to themselves.
- Stay with their group & have fun!
- Be independent in toileting & changing
- Inappropriate behaviour (e.g., bullying, aggression) may result in dismissal.
- Contact Inclusion Services for support with specific needs.

What To Bring To Camp

Don't forget to bring these items with you to camp everyday!

-  Lunch and 2 snacks
-  Refillable water bottle
-  Sunscreen and hat
-  Comfortable clothing and running shoes
-  Extra clothes for younger campers
-  Camp-specific items as outlined in the Welcome Email

Do not bring valuables, electronics, toys, or money. The Town is not responsible for lost or damaged items.



Our Vibrant Staff

CAMP STAFF INFORMATION



The Town of Newmarket Camp staff are chosen for their passion for working with children, creativity, enthusiasm and leadership skills.

Qualifications:

- Standard First Aid and CPR-C
- High Five Principles of Healthy Childhood Development
- Safeguard
- Police Vulnerable Sector Check
- Training in behaviour management, program planning, customer service, inclusion and so much more!

Supervisors & Inclusion Facilitators receive additional training in:

- Non-Violent Crisis Intervention

HEAR FROM OUR SUMMER 2024 CAMP PARENTS/ GUARDIANS!

“My son had a great time at camp! Staff were responsible, welcoming and so enthusiastic. What a great week! Thank you for providing such a positive experience for him.”

“My child had such a wonderful week at his first Town camp! He was excited to go each day and looked forward to all the activities. The staff were always so respectful, organized, timely, supportive, kind and knowledgeable. He is already planning on coming back next year!”

“The 1:1 program is phenomenal! The staff that have worked with my child were attentive, obviously well-trained, and have a wonderful sense of humour! I got a verbal report each day, which always started off with all the positive things about my child. They were informative and supportive, which assured me that my child was being properly cared for.”

“What truly amazing staff. They helped my daughter feel welcomed and comfortable when she was nervous on her first day of camp. The staff really worked to make a connection with my daughter, and she left the week with so many new friends thanks to them! She had so much fun everyday and came home so happy to tell us about all of the exciting things she did.”

Staff Spotlight

MEET DANI! CAMP DIRECTOR, SUMMER 2024



Dani has worked multiple positions with Town of Newmarket camps over the past several years, while also working as a Preschool Educational Assistant role throughout the school year.

They have a passion for working with children, prioritize inclusion, and are sure to build a strong connection their campers to ensure everyone feels welcomed.

Their enthusiasm and love for camps truly has a positive impact on every camper they cross paths with.

Camp Locations

Armitage Village Public School

125 Savage Road | AVPS

Denne Public School

330 Burford Street | DPS

Clearmeadow Public School

200 Clearmeadow Blvd | CLPS

Crossland Public School

255 Brimson Dr | CRPS

Magna Centre

800 Mulock Drive | MC

Newmarket Community Centre & Lions Hall

200 Doug Duncan Drive | CCLH

Newmarket Soccer Club

621 Newpark Blvd | NSC

NewRoads Performing Arts Centre

505 Pickering Crescent, | NRPAC

Old Town Hall

460 Botsford St | OTH

Ray Twinney Recreation Complex

100 Eagle Street West | RTRC

Recreation Youth Centre & telMAX Indoor Skate Park

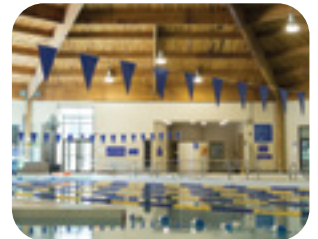
56 Charles Street | RYC

Stuart Scott Public School

247 Lorne Ave | SSPS

Terry Fox Public School

161 Sawmill Valley Dr | TFPS



Extended Care



Regular camp hours are 9 a.m. to 4 p.m. **Sign in will begin at 9:00 a.m.** and all campers must be signed out by 4:00 p.m. to avoid a late fee. Extended Care is available at an additional cost for campers 4 to 12 years old who need care before and/or after these hours

Extended Care Locations And Hours

The Town of Newmarket has 5 Extended Care locations! Please see the camp description for details on if and where Extended Care is available for your camp, as Extended Care is not available at all camp locations. Campers must first be registered in a full day camp in order to access Extended Care services (if applicable).

Location	Address	Hours
Community Centre & Lions Hall	200 Doug Duncan Drive	7:30 to 9 a.m. & 4 to 5:30 p.m.
Ray Twinney Recreation Complex (RTRC)	100 Eagle Street West	
Magna Centre (MC)	800 Mulock Drive	
Recreation Youth Centre and telMAX Indoor Skate Park (RYC)	56 Charles Street	
Stuart Scott Public School (SSPS)	247 Lorne Avenue	

Please note: during the week of August 25 to 29, Extended Care is only available at the Ray Twinney Recreation Complex.

Extended Care



HOW TO REGISTER

1. Start by registering for the camp of your choice!
2. Check the camp description to confirm the Extended Care location of your camp.
3. If Extended Care is available for your camp, use the course codes below to register for the appropriate Extended Care course.
4. Please note, if you need morning and evening Extended Care, you will need to register for both courses, separately.

Extended Care AM

Week	Fees	RTRC	MC	CCLH	RYC	SSPS
July 2 – 4	\$16.26	50188	50206	50223	50240	
July 7 – 11	\$26.50	50189	50207	50224	50241	50260
July 14 – 18	\$26.50	50190	50208	50225	50242	50261
July 21 – 25	\$26.50	50191	50209	50226	50243	50262
July 28 – August 1	\$26.50	50192	50210	50227	50245	50266
August 5 – 8	\$21	50193	50211	50228	50246	50270
August 11 – 15	\$26.50	50194	50212	50230	50247	50271
August 18 – 22	\$26.50	50195	50213	50231	50248	
August 25 – 29	\$26.50	50196				

Extended Care PM

Week	Fees	RTRC	MC	CCLH	RYC	SSPS
July 2 – 4	\$16.26	50197	50214	50232	50249	
July 7 – 11	\$26.50	50198	50215	50233	50250	50272
July 14 – 18	\$26.50	50199	50216	50234	50251	50276
July 21 – 25	\$26.50	50200	50217	50235	50252	50277
July 28 – August 1	\$26.50	50201	50218	50236	50253	50279
August 5 – 8	\$21	50202	50220	50237	50254	50280
August 11 – 15	\$26.50	50203	50221	50238	50255	50281
August 18 – 22	\$26.50	50204	50222	50239	50256	
August 25 – 29	\$26.50	50205				

Inclusion & Support Services



The Town of Newmarket is dedicated to ensuring all campers have a successful camp experience. There are times when a child requires more support than our program ratios are able to provide. In these cases, we strongly recommend consulting with us about our support options and adapted camps.

How do I know if additional support is required?

Additional support is required if:

- Extra support is required at school
- A disability exists that could affect the safety of the participant or other participants
- Extra support is required at home for basic care
- Participant is associated with a support agency and/or program
- Participant has a safety plan with their educational institution
- There are behaviours to be managed (ie. biting, scratching, pinching, eloping, etc.)

Families are required to complete an All About Me Package, and in some cases provide any existing safety plans to help camp staff with program adaptations and overall success. When considering a recreation experience, please consider the individual's needs, and that the recreation integrated setting may not be suitable for all persons. Health and Safety of participants and staff is paramount, which could result in participants being denied access to the program.

Adapted Camps

The Town of Newmarket is excited to expand our Adapted Camps this summer! Adapted Camps are specifically designed programs for campers with disabilities and special needs. These programs will feature smaller group sizes, smaller staff ratios (1:3 staff to participants), a sensory aware environment, and more targeted and individualized programming activities. Please see the "Adapted" section of this guide for more information on our adapted preschool, children & youth Camps!

Inclusion 1:1 Support

The Town of Newmarket provides Inclusion 1:1 Support to campers with disabilities and unique needs at no additional cost to families (camp fees still apply) in order for them to be integrated and successfully participating in camps. Support is not guaranteed and is offered on a first-come first-serve basis. Families are required to register into the corresponding "Inclusion 1:1 Support Request" Code to request a 1:1 Support Staff (see below for weekly codes). Prior to the camp season, the Recreation Programmer will contact families directly to confirm their staff support.

Please Note: There may be cases when we may ask an individual be paired with a support person if we deem necessary based on safety concerns for the individual, camp group, and/or Town of Newmarket Staff.

Inclusion & Support Services



Visit the “Adapted Camps” Section on page 37 for more information!

Inclusion 1:1 Support Request

Inclusion 1:1 Support is a service (not a camp) that is offered to campers with disabilities and unique needs in order to participate fully and successfully in camps. By registering in this service, you are requesting a Town of Newmarket Inclusion Facilitator to work 1:1 with your camper with a disability. Please register into the weeks of 1:1 support that correspond to the child’s registered camp. Please note, this is only a request process. A camper’s Inclusion 1:1 Support Staff will be confirmed by the Town of Newmarket Inclusion team.

Ages: 4+ | Location: Corresponding Camp Location | Fee: No Charge

Inclusion 1:1 Support Week	Dates	Code
Inclusion 1:1 Support Request – Summer Kick Off	June 30	54863
Inclusion 1:1 Support Request – Week 1	July 2 – 4*	50894
Inclusion 1:1 Support Request – Week 2	July 7 - 11	50895
Inclusion 1:1 Support Request – Week 3	July 14 - 18	50896
Inclusion 1:1 Support Request – Week 4	July 21 - 25	50897
Inclusion 1:1 Support Request – Week 5	July 28 – Aug 1	50898
Inclusion 1:1 Support Request – Week 6	Aug 5 – 8**	50899
Inclusion 1:1 Support Request – Week 7	Aug 11 - 15	50900
Inclusion 1:1 Support Request – Week 8	Aug 18 - 22	50901
Inclusion 1:1 Support Request – Week 9	Aug 25 - 29	50902

*3 **4 Day Week

Can I provide my own inclusion support?

Yes, families may provide their own support (family member, friend, trained support worker or social worker). A Vulnerable Sector Screening and a signed release of liability form is required prior to entering the camp space. The support worker is required to participate in all activities as a positive role model for the participants and adhere to Town of Newmarket Policies and Procedures.

If you require further assistance or would like more information on support options, please contact the Recreation Programmer – Inclusion & Support Services at 905-953-5300 ext. 2821 or inclusion@newmarket.ca

Kids on the Move



Enjoy an afternoon of Camp **FREE!**

Daily Camp Drop-In

Clearmeadow Public School
(200 Clearmeadow Blvd)

Ages: 4 to 12
1 to 4 p.m. daily

Dates	
July 7 to 11	July 28 to August 1
July 14 to 18	August 5 to 8
July 21 to 25	August 11 to 18

This daily drop-in program gives children an opportunity to engage and socialize in a safe and friendly atmosphere. Staff will lead small groups through a variety of games, sports, arts and crafts, and outdoor activities which are designed for participants to have fun. Participants should bring a water bottle, hat, sun protection, and close toed shoes. In the case of inclement weather or extreme heat, the program will move indoors to Clearmeadow Public School's gymnasium.

Pre-registration is not available

Please note: Maximum 25 participants per session. **This program will operate on a first-come first-serve basis - only walk-ins permitted.** Drop-ins will no longer be accepted after 1:30 p.m.

All participants must fill out our Kids on the Move Participant Information Form. This form only needs to be filled out once for the entire summer! If you are unable to print the form out beforehand, a blank form will be provided to you on-site. Our Kids on the Move Participant Information Form can be found and downloaded here: newmarket.ca/camps

newmarket.ca/camps

Summer Kick Off Camps

Join us for a ONE DAY camp on June 30th, 2025! All camps run from 9:00 a.m. to 4:00 p.m., with no Extended Care. Choose between variety of camps from sports, to general, cooking and skate & scooter! With camps hosted at the Manga Centre, Ray Twinney Recreation Complex and the Recreation Youth Centre & telMAX Indoor Skate Park, there's something for everyone to kick off their summer. Explore our options below!



SUMMER KICK OFF: COOKING CAMP

Ages: 6 to 12 Years

📍 **Recreation Youth Centre & telMAX
Indoor Skate Park**

Start your summer off at our one-day Cooking Camp! Young chefs will learn the fundamentals behind healthy eating and basic cooking techniques. Campers will prepare their own lunch and two delicious snacks. Beyond the kitchen, there's a plate full of fun games, crafts, squad challenges and so much more adventure! While participants will be cooking up some tasty bites, campers are encouraged to bring snacks to supplement the food they will be cooking throughout the day. Get ready to make new friends, try something new, and get a taste of all the fun ahead!

Resident Fee: \$53.24

♥ Extended Care: Not Available



**Click here to
register online**

Camps Index

SUMMER KICK OFF: KIDS PLACE CAMP

Ages: 4 to 5 Years (Mini), 6 to 8 Years (Jr), 9 to 12 Years (Sr)

📍 **Ray Twinney Recreation Complex**

Start your summer off at our one-day Kids Place Camp! This action-packed day is filled with games, sports, crafts, songs, team challenges and plenty of outdoor play. Get ready to make new friends, try something new, and get a taste of all the fun ahead!

Resident Fee: \$42.24

♥ Extended Care: Not Available





SUMMER KICK OFF: MULTI-SPORT

Ages: 4 to 5 Years (Mini),
6 to 12 Years (Jr & Sr)

📍 **Magna Centre**

Start your summer off at our one-day Multi-Sport Camp! Campers will dive into a mix of sports throughout the day, learning basic skills and rules of each sport. Through engaging drills, camp games and outdoor play, participants are sure to stay active and energized all day. Get ready to make new friends, try something new, and get a taste of all the fun ahead!

Resident Fee: \$42.24

♥ **Extended Care: Not Available**



**Click here to
register online**

Camps Index

*****IMPORTANT NOTE:** No camps will run on Canada Day (Tuesday, July 1st). All other camps will begin on Wednesday, July 2nd for a 3-day week.

SUMMER KICK OFF: SKATE & SCOOTER CAMP

Ages: 6 to 12 Years

📍 **Recreation Youth Centre & telMAX
Indoor Skate Park**

Start your summer off at our one-day Skate & Scooter Camp, and get ready to unleash your inner Tony Hawk by mastering the elements of scootering and skateboarding and learning park etiquette! This action-packed day is perfect for everyone, from beginners to seasons skaters, offering plenty of skateboard and scooter time to practice. But that's not all – our staff will lead campers through a variety of active games, sports and an outing along the Tom Taylor Trail. Get ready to make new friends, try something new, and get a taste of all the fun ahead! Please note, no official instruction is provided, but staff are available to support riders and give pointers and encouragement throughout the day! Participants require their own skateboard or scooter and skateboard helmet. Equipment NOT permitted includes: bikes, bike helmets, multi-use helmets, roller skates, penny boards, long boards, RipStiks, scooters with large wheels, and three-wheeled scooters.

Resident Fee: \$42.24

♥ **Extended Care: Not Available**

Summer Camp Index



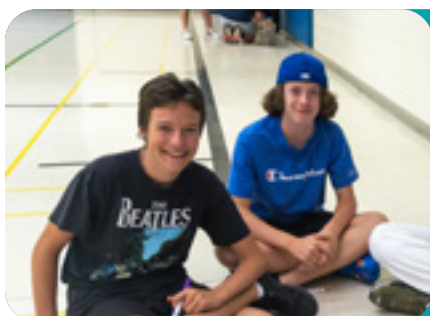
General



Specialty



Sports



Leadership



Adapted

General Camps

CAMP NEWLAKA

Ages 5 – 7 Years

📍 **Community Centre & Lions Hall**

Welcome to Camp Newlaka – the ultimate adventure for those looking to explore and learn about nature and the great outdoors! Campers will dive into a world of exploration and discovery, as they embark on daily excursions along the Tom Taylor Trail and Fairy Lake. Each day will be packed with games, arts & crafts, and nature activities, which are designed for participants to have fun. Campers will also enjoy Community Centre & Lions Hall's splash pad three times each week and a special guest once a week. Don't forget your sunscreen and hat, as majority of the day will be spent outdoors!

5 Day Resident Fee: \$195

4 Day Resident Fee: \$157

3 Day Resident Fee: \$119

♥ Extended Care available at CCLH

CAMP QUEST

Ages 8 – 12 Years

📍 **Recreation Youth Centre & telMAX
Indoor Skate Park**

Seeking a week packed with adventure, friends and nonstop fun? Camp Quest is calling! With action-filled games, creative crafts, camp songs and team challenges, this camp does it all and offers something for everyone. Get ready for three recreational swims, one special guest and rock climbing each week. This ultimate adventure will end with an unforgettable themed event to wrap up the week.

Resident Fee: \$195

♥ Extended Care available at RYC



**Click here to
register online**

Camps Index



ENVI-SCI

Ages 7 – 10 Years

📍 **Community Centre & Lions Hall**

Get ready for an unforgettable adventure at Envi-Sci, where the thrilling world of the environment collides with the wonders of science! Each day unfolds a new excitement as campers take part in experiments, STEM and nature activities, camp games, crafts and outdoor play. This camp will also enjoy two visits to the Community Centre & Lions Hall splash pad, one camp swim, and a special guest. Be sure to pack a pair of rainboots, sunscreen and a hat, as campers will explore local creeks and go on daily excursion to Fairy Lake each day!

5 Day Resident Fee: \$195

4 Day Resident Fee: \$157

3 Day Resident Fee: \$119

♥ Extended Care available at CCLH

KIDS PLACE CAMP JR

Ages 6 – 8 Years

📍 **Ray Twinney Recreation Complex**

Seeking a week of adventure and fun? Then Kids Place Camp is for you! With exciting games, crafts, songs, outdoor play and team challenges, this camp does it all and offers something for everyone. Campers will swim three times a week, enjoy a special guest, and end the week with a themed event.

5 Day Resident Fee: \$195

4 Day Resident Fee: \$157

3 Day Resident Fee: \$119

♥ Extended Care available at RTRC



KIDS PLACE CAMP MINI

Ages 4 – 5 Years

📍 Ray Twinney Recreation Complex

Seeking a week of adventure and fun? Then Kids Place Camp is for you! With exciting games, crafts, songs, outdoor play and team challenges, this camp does it all and offers something for everyone. Campers will participate in three water days, enjoy a special guest, and end the week with a themed event.

5 Day Resident Fee: \$195

4 Day Resident Fee: \$157

3 Day Resident Fee: \$119

♥ Extended Care available at RTRC

LAST BLAST: KIDS PLACE CAMP

Ages 4 – 5 Years (Mini), 6 – 8 (Jr) & 9 – 12 (Sr)

📍 Ray Twinney Recreation Complex

Spend the last week of summer having a BLAST! Campers will do a little bit of everything, including, sports, games, team challenges, crafts, songs and so much more. Campers will enjoy three water days and a special guest. But, that's not it – Jr and Sr campers will also head off on an exciting local outing. Don't miss out on our final week of adventure!

Resident Fee: \$195

♥ Extended Care available at RTRC



Click here to register online

MINI ADVENTURES: LITTLE BUILDERS

Ages 4 – 6 Years

📍 Terry Fox Public School

Put on your construction hats and get ready to build! Through teamwork and creativity, campers will have the chance to bring their imagination to life through building challenges and interactive experiments. Each day is filled with STEM activities, building-based crafts, camp games and outdoor play. Campers will also enjoy two water days, a special guest and a themed event to end the week. We can't wait to see what you create!

Resident Fee: \$157

♥ No Extended Care available



MINI ADVENTURES: MAGIC IN ME

Ages 4 – 6 Years

📍 Terry Fox Public School

Wizards, fairies and princesses, oh my! The magic of classic fairy tales and mythical creatures comes to life in this whimsical camp! Campers will embark on an imaginative journey filled with captivating story times, crafts, songs, camp games and outdoor play. Each week will also bring three water days, a magical special guest and a themed event.

Resident Fee: \$195

♥ No Extended Care available

Camps Index

MINI ADVENTURES: MISSION IMPOSSIBLE

Ages 4 - 6 Years

📍 **Terry Fox Public School**

Get your magnifying glasses ready for this one! Our youngest agents will take on the thrilling adventure of secret missions and mysterious clues, just like a spy would! Mission Impossible brings active camp games, scavenger hunts, crafts, obstacle courses and outdoor play. Plus, campers will enjoy three water days, a special guest and a themed event to end the week.

Resident Fee: \$195

♥ No Extended Care available

MINI ADVENTURES: OUT OF THIS WORLD

Ages 4 - 6 Years

📍 **Terry Fox Public School**

3, 2, 1...BLAST OFF! Young astronauts will be launched into a galaxy of space-themed camp activities. This action-packed week is filled with scavenger hunts, obstacle courses, active games, outdoor play, team building challenges, crafts and engaging lessons focused on outer space. Campers will enjoy three water days, a special guest and a themed event to end the week.

Resident Fee: \$195

♥ No Extended Care available

MINI ADVENTURE: SAFARI EXPLORERS

Ages 4 - 6 Years

📍 **Terry Fox Public School**

Get ready for an adventure into the wild! Safari Explorers is the perfect adventure for our youngest animal lovers. Each day brings outdoor exploration, scavenger hunts, animal and nature themed crafts, camp games and engaging lessons focused on different animals. Campers will enjoy three water days and a themed event to end the week. The highlight will be our special guest, where campers will interact with real animals up close!

Resident Fee: \$195

♥ No Extended Care available



**Click here to
register online**

Camps Index



MINI ADVENTURES: SUPERHERO ACADEMY

Ages 4 – 6 Years

📍 **Terry Fox Public School**

Calling all superheroes! Welcome to Superhero Academy, where young heroes discover their superpowers! This action-packed week brings imaginative play, active games, obstacle courses, team building activities, crafts, and outdoor play. Campers will enjoy three water days, a powerful special guest and a themed event to end the week.

Resident Fee: \$195

♥ No Extended Care available

OUTTA TOWNERZ

Ages 9 – 12 Years

📍 **Magna Centre**

Get ready to explore further than ever before! Campers will embark on FIVE full-day trips across the GTA, exploring some of the city's most thrilling destinations. Imagine discovering underwater wonders at Ripley's Aquarium, stepping back in time at the AGO, building epic creations at Lego Land, and coming face-to-face with the wildlife at the Toronto Zoo! Each day promises new experiences, laughter and memories to last a lifetime. Admission fees are included.

Resident Fee: \$410

♥ Extended Care available at MC

SUMMER SIZZLERS

Ages 4 – 8 Years

📍 **Clearmeadow Public School**

Come see what's sizzlin' with the Town of Newmarket this summer! This half day camp is packed with non-stop fun and excitement. Campers will stay active through various camp games, unleash their creativity with amazing crafts, belt out their favourite camp songs, tackle squad challenges and splash into daily water activities. Don't forget your hat and sunscreen, as this camp will spend majority of the morning outdoors!

5 Day Resident Fee: \$119

4 Day Resident Fee: \$96.20

♥ No Extended Care available



**Click here to
register online**

Camps Index

Specialty Camps



AI PIONEERS, CODING, ETHICS & INNOVATION

Ages 8 – 11 Years

📍 **Armitage Village Public School**

Delivered in partnership with Kids Great Minds

This immersive camp offers the opportunity for children to dive deep into Artificial Intelligence. It teaches them to use machine learning and build predictive AI models to solve everyday challenges. From teaching computers to recognize objects to gathering data, they'll collect their own datasets, train models to classify objects, and even explore facial recognition technology. Plus, they'll code their own AI-powered games, making it a hands-on journey into the future of tech. Discussions on AI ethics will ensure they grow as both innovators and critical thinkers, making tech learning both exciting and interactive!

Resident Fee: \$404

♥ **No Extended Care available**



Click here to register online

Camps Index

ART ATTACK CAMP

Ages 6 – 9 Years

📍 **Magna Centre**

Let's get crafty! Join us for a week of visual arts and crafts, where campers will enjoy drawing, sketching, painting and so much more! Staff will guide campers through two crafts per day, while encouraging them to put their own unique spin on their one-of-a-kind work.

Campers will enjoy a special guest and three recreational swims per week. This camp wraps up with a 'Juice & Cheesie' Art Show on Friday at 3 p.m. for friends and family.

5 Day Resident Fee: \$215

4 Day Resident Fee: \$173

3 Day Resident Fee: \$131

♥ **Extended Care available at MC (weeks 1 to 8)**



ART STUDIO CAMP

Ages 9 – 13 Years

📍 **Old Town Hall**

Join us for a mature and creative learning environment tailored to pre-teens passionate about visual arts. Young artists will be exposed to a variety of art mediums throughout the week, including watercolours, acrylics, sculpture, paper mâché, mosaics, cartooning, sketching, and pen and ink. With guidance from our staff, campers will refine their artistic skills and add their own personalized touch to their pieces. Campers will also enjoy one recreational swim and special guest each week. The camp will end with an Art Gallery for friends and family on Friday at 3 p.m., to showcase creations made throughout the week.

Resident Fee: \$232.50

♥ **Extended Care available at CCLH**

BRIXOLOGY

Ages 6 – 12 Years

Terry Fox Public School

Delivered in partnership with Mad Science

Brixology Camp sets the foundation for our next generation of makers! Using LEGO® bricks, campers will become junior engineers as they team up to construct different LEGO® projects. Each day is chock-full of fun and exciting indoor and outdoor activities to not only keep your child engaged but also keep them active. They will explore mechanical engineering as they build boats and vehicles. The thrill of aerospace engineering will come alive as they assemble a space station. And that's not all – from carnival rides to drawing machines, mechanical animals to truss bridges, your future engineer will build upon their creativity through fun and hands-on design challenges. Let the tinkering begin! Daily Topics Include: Structures, Waterworks, Fun Fair, Transportation, Design.

Resident Fee: \$335

♥ No Extended Care available

CARTOON COMPUTER ANIMATION CAMP

Ages 6 – 11 Years

Armitage Village Public School

Delivered in partnership with Kids Great Minds

Come unleash your imagination in this camp by creating your own animated cartoon movie. You will be guided step by step in a collaborative, computerized environment, as you create and watch your cartoon come to life. The software's engaging design and multiple levels, offer a fun, rewarding experience providing the novice animator the courage to create with confidence! At the end of the camp, parents will be sent their animated movies.

Resident Fee: \$334.50

♥ No Extended Care available



[Camps Index](#)



[Click here to register online](#)



CITY BUILDER

Ages 5 – 12 Years

📍 **Denne Public School**

Delivered in partnership with Robothink

Become a city planner and engineer! Campers will construct robots to help build and manage a mini city. Outdoor activities include: City-themed physical activities such as “construction relays” and “bridge building” exercises (using lightweight materials) will engage teamwork and coordination.

Resident Fee: \$290

♥ **No Extended Care available**



**Click here to
register online**

Camps Index

COOKING CAMP

Ages 6 – 8 Years (Jr) & 9 – 12 Years (Sr)

📍 **Recreation Youth Centre & telMAX
Indoor Skate Park**

Get ready to slice, dice, and spice up your summer at Cooking Camp! Young chefs will learn the fundamentals behind healthy eating and basic cooking techniques. Campers will prepare their own lunch and two delicious snacks. Beyond the kitchen, there’s a plate full of fun games, crafts, squad challenges and so much more adventure! While participants will be cooking up some tasty bites, campers are encouraged to bring snacks to supplement the food they will be cooking throughout the day. Don’t miss this chance to see what’s cookin’ in Newmarket!

5 Day Resident Fee: \$250

4 Day Resident Fee: \$201

3 Day Resident Fee: \$152

♥ **Extended Care available at RYC**



CREATING VIRTUAL REALITY AVATARS

Ages 7 – 11 Years

📍 **Armitage Village Public School**

Delivered in partnership with Kids Great Minds This camp is for every child interested in 3D Character Design and Virtual Reality (VR)! Campers will learn how to create industry level, pixelated and textured 3D characters from their favourite movies and videogames. These characters will later be added to their own personalized environments that can be used in animations, video games and seen with VR devices. KGM will bring in the VR goggles so campers can enjoy their amazing work!

Resident Fee: \$404

♥ No Extended Care available

CREATIVE CAMPERS

📍 Ages 4 – 6 Years

Crossland Public School

Let's get creative! This specialty camp is the perfect introduction to all things arts! Each day allows campers to express their creativity and imagination through drama games, skits, visual arts and crafts, singing songs and learning short dance routines. Campers will also enjoy traditional camp games and two water days each week. A showcase will end each week on Friday at 3 p.m. for friends and family.

Resident Fee: \$210

♥ Extended Care available at RTRC

[Camps Index](#)

DYNAMIC DISCOVERIES

Ages 4 – 6 Years

📍 **Terry Fox Public School**

Delivered in partnership with Mad Science

This Camp is guaranteed to spark the imagination of your junior scientist! An unforgettable week of discovery and exploration will take campers on an amazing journey. Children will experiment with magnets, rainbows, musical vibrations, the five senses, and even rocketry! Hands-on fun happens every day as each camper creates their own thaumatrope, mini brain, Professor Beakerdude, Skyblazer Rocket, and much more! Mad Science camp fosters your child's curiosity in an age-appropriate and engaging environment that is fun, interactive and exciting. Daily Topics Include: Sticky Stuff, Animals, My Body, Space, Light & Sound.

Resident Fee: \$335

♥ No Extended Care available

FLIGHT ACADEMY

Ages 4 – 6 Years (Jr) & 6 – 12 Years (Sr)

📍 **Terry Fox Public School**

Delivered in partnership with Mad Science

The week will fly by as we travel through time looking at the earliest flying machines right up to modern day rocket launches. We'll cover it all. Become a Junior Aviator and discover the principals of flight and aerodynamics. Zip up your space suit for a planetary tour while we investigate the wonders of our very own Milky Way. Join your fellow astronauts as we send an awesome Mad Science rocket to the moon... well at least into the sky! As Mad Science Technicians, you will build sundials, parachutes and an incredible wind tunnel simulator. It will be a blast! Daily Topics Include: The Wright Stuff, Up, Up & Away, The Milky Way, Newton Loco-Motion, Rockin' Rockets.

5 Day Resident Fee: \$335

4 Day Resident Fee: \$295

♥ No Extended Care available



[Click here to register online](#)

GLEE CAMP

Ages 6 – 8 Years (Jr) & 9 – 12 Years (Sr)

📍 **NewRoads Performing Arts Centre**

Do you love to sing with friends? If so, Glee Camp is where you belong! Throughout the week, campers will unleash their inner superstar by exploring different musical genres, uncovering fascinating music history, and learning catchy harmonies and melodies. They'll even get to create fun movements to go along with their musical pieces and enjoy one recreational swim each week! To end the week, campers will take the stage on Friday at 3 p.m. to showcase their hard work and talent.

5 Day Resident Fee: \$205.50

4 Day Resident Fee: \$165.40

♥ **No Extended Care available**

HOLLYWOOD FILM MAKING

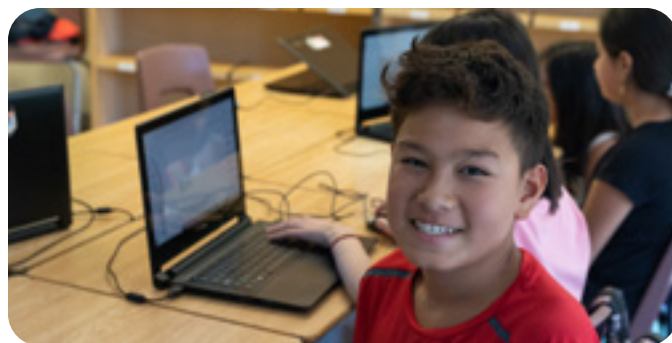
Ages 8 – 14 Years

📍 **Stuart Scott Public School**

Delivered in partnership with Film Camp in a Box
Fill your week with action, adventure and a lot of comedy with Film Camp in A Box movie making camp. Mentored by master filmmakers, campers will engage in hands-on exploration of the filmmaking process, including pre-production, production and post-production. Working in small crews, they will learn about cinematography, script writing and editing on Final Cut Pro. Campers will then create, act in and edit a short film and movie trailer, adding special effects, music, voices, titles and sound effects. Participants will have the opportunity to use our latest technology, including Mac books, 4K cameras, tripods, boom microphones, green screens and the use of an aerial drone. Crews will also create their own promotions and advertising links to showcase their short film to the world. Movies will be presented at our red carpet, popcorn film festival and archived on our digital theatre.

Resident Fee: \$375

♥ **Extended Care available at SSPS**



JUNIOR INVENTORS

Ages 4 – 6 Years

📍 **Denne Public School**

Delivered in partnership with Engineering for Kids
We have opened the workshop for a week full of fun, creativity, and of course – engineering! Campers will invent new machines and explore creative design solutions using the Engineering Design Process. Activities include: Robotics & Coding, plus hands-on Mechanical & Civil Engineering.

Resident Fee: \$365

♥ **No Extended Care available**

JUNIOR POWER & ENERGY CAMP

Ages 4 – 6 Years

📍 **Denne Public School**

Delivered in partnership with Engineering for Kids
In the Power and Energy camp, we look at ways to get things moving...no batteries required. In this camp, campers explore the foundational concepts of potential and kinetic energy by building machines. Additionally, students will explore natural power and energy sources such as falling water. Get ready for a shock in this energetic and engaging engineering experience! Activities include: Robotics & Coding, Mechanical & Marine Engineering.

Resident Fee: \$365

♥ **No Extended Care available**

[Camps Index](#)



[Click here to register online](#)



Click here to
register online



LEGO & CLAY STOP MOTION ANIMATION

Ages 8 – 12 Years

📍 **Stuart Scott Public School**

Delivered in partnership with Film Camp in a Box

Fill your week with action, adventure and a lot of comedy with Film Camp in A Box Claymation and Lego animation camp.

Mentored by master filmmakers, campers will engage in hands-on exploration of the stop motion animation process, including pre-production, production and post-production. Working in small crews, they will learn about stop motion animation, set design, script writing and editing. Campers will then create their own stop motion animation and edit a short film and movie trailer, complete with sound effects, music, voice, sound effects and special effects. Movies will be presented at our red carpet, popcorn film festival and archived on our digital theatre.

5 Day Resident Fee: \$375

4 Day Resident Fee: \$306

♥ Extended Care available at SSPS

LET'S MAKE TOYS

Ages 4 – 6 Years

📍 **Denne Public School**

Delivered in partnership with Engineering for Kids

It is fun for a kid to play with a toy. Imagine how amazing it can be to play with a self-made toy. In this full-week camp, the youngest engineers will be introduced to the fundamental concepts of energy, materials, and movement. Campers will explore and make different mechanical toys. They will also build and program robotics toys including, RACING CAR, and MARS ROVER.

Resident Fee: \$365

♥ No Extended Care available

MACHINE MANIACS

Ages 4 – 6 Years (Jr) & 6 – 12 Years (Sr)

📍 **Terry Fox Public School**

Delivered in partnership with Mad Science

Join us for a week full of creations, chemistry and cameras! Work together with your fellow engineers to build the best bridge in our shake, rattle and roll challenge. Turn your daily newspaper into a four foot high Geodesic Dome that you can sit in with your friends. Explore the world of birds and beasts with bird house building and our super bug investigation. Mix, mash and brew concoctions to create cool sidewalk chalk and bath fizzers during a day in the chemistry lab. Discover the wonders of photography as you study cameras, light and colours. Daily Topics Include: Jr Engineers, Shutterbugs, Machine Mania, Crazy Chemistry, The Birds & The Beasts.

Resident Fee: \$335

♥ No Extended Care available

MINECRAFT THEME PARK

Ages 7 – 12 Years

📍 **Denne Public School**

Delivered in partnership with Engineering for Kids

This camp will have students build their very own Minecraft amusement parks! Students will have to navigate several engineering and teamwork challenges to do so. Students will draft blueprints and plans for their parks on paper before beginning to create it in Minecraft to make it as much like the process of designing a real amusement park as possible. Activities include: Minecraft Design, Hands-on Mechanical Engineering.

Resident Fee: \$375

♥ No Extended Care available

[Camps Index](#)



MINECRAFT URBAN INNOVATIONS

Ages 7 – 12 Years

📍 **Denne Public School**

Delivered in partnership with Engineering for Kids
Design, create, and make your very own city come alive using Minecraft! In this camp, kids will explore a variety of themes centered around scientific, sustainable, innovative, and futuristic city planning and design. Kids will immerse themselves in Minecraft while applying the Engineering for Kids design process to create a model of their very own, futuristic, sustainable city.

Resident Fee: \$375

♥ No Extended Care available

MINECRAFT & ROBOTICS MISSION TO MARS

Ages 7 – 12 Years

📍 **Denne Public School**

Delivered in partnership with Engineering for Kids
Campers will learn about the engineering, technology, and innovation that is required for the future human habitation of Mars. Within Minecraft, students will complete a variety of missions that are necessary for survival and the advancement of science on the Red Planet. Students will apply their creativity, collaboration, and problem-solving skills while completing missions within EFK's unique, customized, collaborative Mission to Mars Minecraft Map. This is a one-of-a-kind, out-of-this-world experience you will not find anywhere else. Activities include: Minecraft, Robotics, Coding, Hands- On Aerospace.

Resident Fee: \$375

♥ No Extended Care available



Click here to register online

MOVE IT!

Ages 4 – 5 Years (Mini), 6 – 8 Years (Jr) & 9 – 12 Years (Sr)

📍 **Old Town Hall**

Calling all you movers and shakers out there! Join us for an exciting journey through the world of dance. Campers will be introduced to different styles of dance through high-energy warm-ups, across the floor exercises and new choreography each day. This camp will also enjoy crafts, camp games, one recreational swim for Jr & Sr campers and two water days for Mini campers! The week will wrap up with a dance showcase for friends and family on Friday at 3 p.m.

5 Day Resident Fee: \$205.50

4 Day Resident Fee: \$165.40

♥ **Extended Care available at CCLH**



MUSIC VIDEO PRODUCTION

Ages 9 – 14 Years

📍 **Stuart Scott Public School**

Delivered in partnership with Film Camp in a Box
Rock and Roll all night and every day in our Music Video Production workshop. Mentored by master filmmakers, campers will engage in hands-on exploration of the music video production process, including pre production, production and post production. Working collaboratively in small crews, they will learn about cinematography specific to music videos and advanced editing techniques. Using an existing pop culture song, campers will listen to the lyrics, learn them and create their own story and meaning. They will then act in and edit their full music video. Crews will also create their own promotions and advertising links to showcase their music video the world. Movies will be presented at our red carpet, popcorn film festival and archived on our digital theatre.

Resident Fee: \$375

♥ **Extended Care available at SSPS**

Camps Index



REDSTONE INVENTIONS IN MINECRAFT® CAMP

Ages 7 – 12 Years

📍 **Armitage Village Public School**

Delivered in partnership with Kids Great Minds
Campers will enjoy the week building and playing in Minecraft® while learning basic circuitry principles. Campers will use a team approach to discover the underlying mechanics of the game and learn new logic and problem-solving skills, giving them an opportunity to create bigger and better versions of their inventions in the world of Minecraft®.

Resident Fee: \$404

♥ **No Extended Care available**

ROBOGAME CARINVAL & MASTER MACHINES

Ages 7 – 12 Years

📍 **Denne Public School**

Delivered in partnership with Engineering for Kids
Gear up for an exciting week of Robotics & mechanical engineering! In this camp, students will explore several of the mechanical forces that create movement in various machines. Students will work as mechanical engineers using EFK's Engineering Design Process to create exciting, hands-on projects that spin, cascade, launch, pivot, dig, and race. RoboGames Carnival is a place where robots can have fun, compete, and go on an exciting adventure. Activities include: Robotics Competitions, Mechanical Engineering.

Resident Fee: \$365

♥ **No Extended Care available**



Click here to register online

Camps Index

SCIENCE SLEUTHS

Ages 4 – 6 Years (Jr) & 6 – 12 Years (Sr)

📍 **Terry Fox Public School**

Delivered in partnership with Mad Science
An awesome week of sleuthing, investigation and discovery awaits you! Send messages to your friends with your very own secret code wheels. Hunt down animal tracks and follow hidden scent trails during a day of nature discoveries. Brain Goo and Electroplating will thrill all junior chemists. Children will build their own cool Stereoscopic Viewer to see far-off planets in 3D and become a Mad Science junior astronomer. Daily Topics Include: Mad Messages, Earth Awareness, Nature, Chemical Counting, Space Day.

Resident Fee: \$335

♥ **No Extended Care available**



SPACE MISSION

Ages 5 – 12 Years

📍 **Denne Public School**

Delivered in partnership with Robothink
Blast off into outer space! Campers will build robots capable of exploring simulated alien terrains and collecting space samples. Outdoor activities include: Space-themed fitness challenges include “zero-gravity” training (balancing exercises) and “asteroid dodging” (dodgeball-style games).

Resident Fee: \$355

♥ **No Extended Care available**

THEATRE CAMP

Ages 6 – 8 Years (Jr) & 9 – 12 Years (Sr)

📍 **NewRoads Performing Arts Centre**

Looking to bring your acting skills to the next level? Join us for this 2-week camp designed for aspiring actors of all levels! Campers will develop their performance skills through character development exercises, improvisation activities, drama games, audition preparations, skits and script readings. Campers will also enjoy one recreational swim during the first week, while learning the elements of producing a successful show. This camp will put on two performances for friends and family to come support our talented performers and watch them shine on stage! Show times include the final Thursday evening at 6 p.m. and the final Friday afternoon at 3 p.m. There is an evening show for this camp on Thursday July 24 and August 21 at 6:00 p.m. Extended Care will be provided only on these dates, until the end of the show.

Resident Fee: \$406

♥ No Extended Care available



VIDEO GAME CREATION

Ages 7 – 10 Years

📍 **Armitage Village Public School**

Delivered in partnership with Kids Great Minds

Campers will learn a visual programming language using an entirely icon-based interface, campers will learn advanced game design concepts in a simple, direct, and intuitive manner. This intelligent screen time is an excellent opportunity to introduce kids to computer programming. Game controllers will be on site to simulate the console experience.

Resident Fee: \$404

♥ No Extended Care available

[Camps Index](#)



3D PRINTING & MODELLING CAMP

Ages 7 – 12 Years

📍 **Armitage Village Public School**

Delivered in partnership with Kids Great Minds

Come and 3D print with us!! Campers will fabricate their own 3D objects from start to finish; such as cars, minions, robots, small toys and more. Our 3D printer will be on site so kids can see it in action, learning how it works, while printing their own creations! Each participant will be able to print 2 small 3D pieces to take home to show off!

Resident Fee: \$404

♥ No Extended Care available



[Click here to register online](#)

Sports Camps

AUSSIE X

Ages 6 – 9 Years

Armitage Village Public School

Delivered in partnership with X-Movement

One of Canada's most unique camp experiences: an Australian cultural and sports program that teaches Cricket, Aussie Football, and Netball. This camp is a new level of FUN with sport-themed games and tournaments fused with sports psychology mindset lessons such as goal-setting, positive self-talk, and the power of visualization. This is an excellent camp for sport-lovers BUT is also perfect for non-sporty campers to excel because of the level-playing field of learning new sports. Campers will walk away with increased confidence to try new things and a new level of self-belief to achieve their goals.

Resident Fee: \$350

♥ No Extended Care available

BADMINTON & PICKLEBALL

Ages 7 – 10 Years

Denne Public School

Delivered in partnership with Elevation Athletics

Join us for an exciting and dynamic summer camp offered in partnership with Elevation Athletics where kids not only learn the ins and outs of badminton and pickleball, but also enjoy a wide variety of activities that promote creativity, teamwork, and outdoor playtime! Throughout the camp, young athletes will participate in skill-building drills and fun games focused on badminton and pickleball. Whether they are learning how to serve, rally, or perfect their footwork, they will develop important sports techniques in a supportive and engaging environment.

5 Day Resident Fee: \$240

4 Day Resident Fee: \$193

♥ No Extended Care available



BASKETBALL CAMP

Ages 8 – 12 Years

Clearmeadow Public School

Delivered in partnership with YNBA

Stay healthy and active this summer with YNBA Basketball. The Town of Newmarket has partnered with the not-for-profit organization, YNBA, to run skills and drills all in a 'fun' filled atmosphere! Take your game to the next level! Campers will participate in outdoor activities daily, unless there is inclement weather.

5 Day Resident Fee: \$300

4 Day Resident Fee: \$258

♥ No Extended Care available



**Click here to
register online**

Camps Index

Non-Residents will be charged an additional \$30 fee for each camp.



CAMP EXTREME

Ages 9 – 12 Years

 **Magna Centre**

Welcome to Camp Extreme, where we take adventure and fun to the next level! Take on the challenge of our outdoor skate park, high ropes course and trampoline park, and unleash your inner daredevil. This action-packed and adrenaline-pumping camp also includes camp games, sports, team challenges and two recreational swims each week. Every moment is an experience to ignite your spirit of adventure! Participants require their own skateboard or scooter and skateboard helmet. Equipment NOT permitted includes: bike helmets, multi-use helmets, roller skates, penny boards, long boards, RipStiks, scooters with large wheels, and three-wheeled scooters.

5 Day Resident Fee: \$240

4 Day Resident Fee: \$193

 **Extended Care available at MC**

HOCKEY CAMP

Ages 6 – 9 Years (Jr) & 9 – 12 Years (Sr)

 **Magna Centre**

Get ready to elevate your game at Hockey Camp! Campers will learn on and off ice skills and drills to enhance playing performance. Each day will include three hours of ice time, ball hockey, team challenges, fitness exercises and camp games. With a focus on getting active and having fun, this recreational camp is perfect for players who want to learn the fundamentals of hockey. Participants must be able to skate independently bring full hockey equipment, including a CSA approved helmet with face cage, mouth guard, neck guard, jersey, shoulder pads, elbow pads, jock, gloved, hockey stick, hockey pants, shin pads, hockey socks and skates.

5 Day Resident Fee: \$265

4 Day Resident Fee \$213

 **Extended Care available at MC**

KARATE CAMP

Ages 6 – 11 Years

 **Armitage Village Public School**

Delivered in partnership with Jitsu-Do Karate
Self-defense, kicks, punches, fitness and fun await at Karate Camp, in partnership with Jitsu-Do Karate! This camp is hosted by black belt instructors and will give campers a great introduction to karate mixed with camp games, sports, crafts, and fun!

Resident Fee: \$265

 **No Extended Care available**



**Click here to
register online**

Camps Index



MINOR LEAGUERS

Ages 4 – 5 Years

📍 **Magna Centre**

Hey future sports stars! Are you ready for an action-packed week at Minor Leaguers? Jump into all kinds of exciting sports, and team up with new rookies to learn a variety of new skills, drills and rules. Plus, enjoy active camp games, crafts, songs, outdoor play and two water days each week. Bring your best sportsmanship and get ready to cheer each other on!

5 Day Resident Fee: \$195

4 Day Resident Fee: \$157

3 Day Resident Fee: \$119

♥ Extended Care available at MC (weeks 1 to 8)

OFF TO THE OLYMPICS

Ages 4 – 6 Years (Mini) & 6 – 8 Years (Jr)

📍 **Denne Public School or Recreation Youth Centre & telMAX Indoor Skate Park**

Join our journey to the Town of Newmarket Olympic Games! Athletes will participate in opening and closing ceremonies, igniting their friendly-competitive spirit and passion for sports. Each day is packed with a variety of drills and games to teach campers the fundamental skills and rules of different Summer Olympic sports, including volleyball, soccer, track and field, badminton, basketball, and much more! Campers will also enjoy team challenges, fitness activities, traditional camp games, outdoor play and three water days each week.

Resident Fee: \$195

♥ Extended Care not available (weeks 2, 3, 7) or available at RYC (week 8)

OUTDOOR SPORTS SR

Ages 9 – 12 Years

📍 **Ray Twinney Recreation Complex**

Join us for a week of outdoor sports at the Ray Twinney Recreation Complex! Learn the rules of a variety of sports, and channel your inner athlete by participating in daily training sessions in track, ultimate frisbee, flag football, soccer, baseball and more! The focus is on getting campers active through a variety of skills, drills, team challenges, camp games, fitness exercises and outdoor play. This camp will also enjoy a recreational swim three times each week.

5 Day Resident Fee: \$195

4 Day Resident Fee: \$157

3 Day Resident Fee: \$119

♥ Extended Care available at RTRC



Click here to register online

Camps Index

Non-Residents will be charged an additional \$30 fee for each camp.



SKATE & SCOOTER

Ages 6 – 9 Years (Jr) & 9 – 12 Years (Sr)

📍 **Recreation Youth Centre & telMAX Indoor Skate Park**

Get ready to unleash your inner Tony Hawk by mastering the elements of scootering and skateboarding and learning park etiquette! This action-packed camp is perfect for everyone, from beginners to seasons skaters, offering plenty of skateboard and scooter time to practice. But that's not all – our staff will lead campers through a variety of active games, sports and outings along the Tom Taylor Trail, plus a refreshing recreational swim once a week. Please note, no official instruction is provided, but staff are available to support riders and give pointers and encouragement throughout the day! Participants require their own skateboard or scooter and skateboard helmet. Equipment NOT permitted includes: bikes, bike helmets, multi-use helmets, roller skates, penny boards, long boards, RipStiks, scooters with large wheels, and three-wheeled scooters.

5 Day Resident Fee: \$195

4 Day Resident Fee: \$157

3 Day Resident Fee: \$119

♥ Extended Care available at RYC (weeks 1 to 8)



Click here to register online

SOCCKER CAMP

Ages 7 – 9 Years (Jr) & 9 – 12 Years (Intermediate)

📍 **Newmarket Soccer Club**

Play like a champion in the World Cup! The Town of Newmarket has partnered with the Newmarket Soccer Club to run a soccer specific camp based around fun filled skills and activities in the Newmarket Soccer Club. Campers will develop their soccer training through small-sided games and ball mastery. Come play like Jessie Fleming and Alphonso Davies!

Resident Fee: \$345

♥ No Extended Care available

SPORTS CAMP JR

Ages 6 – 8 Years

📍 **Magna Centre**

GAME ON! Campers will dive into a mix of sports each day, learning basic skills and rules of each sport. Through engaging drills, camp games, three recreational swims and outdoor play, participants are sure to stay active and energized all week. Get ready to bring your game face and join the fun!

5 Day Resident Fee: \$195

4 Day Resident Fee: \$157

3 Day Resident Fee: \$119

♥ Extended Care available at MC (weeks 1 to 8)

Camps Index

SWIM CAMP

Ages 6 – 9 Years (Jr) & 9 – 12 Years (Sr)

📍 **Magna Centre or Ray Twinney**

Recreation Complex

For the adventurous fish in your family! In this two-week camp, Town of Newmarket lifeguards will guide campers through 45-minute swimming lessons, four times each week. During these lessons, campers will have the opportunity to work towards an LSS Swim for Life level. Swim groups will be created by grouping together swimmers of similar levels. Each day also includes a fun-filled recreational swim, where campers can splash, play games and make new friends! When they're not making waves in the pool, campers will immerse themselves in traditional camp games, crafts, squad challenges and outdoor play.

10 Day Resident Fee: \$600

9 Day Resident Fee: \$540

8 Day Resident Fee: \$481

♥ Extended Care available at MC or RTRC

SWIMCYCLE

Ages 6 – 8 Years (Jr) & 9 – 12 Years (Sr)

📍 **Stuart Scott Public School or Recreation Youth Centre & telMAX Indoor Skate Park**

Gear up and get ready for an adventure! Swim, cycle, tread, trail, float and cruise your way through the summer. With daily bike rides around Newmarket's trails, campers will also cool down with refreshing recreational swims each day. Participants must be proficient and independent bike riders, and bring their own bike, helmet and lock. Due to safety concerns, training wheels are not permitted. Please note, overnight bike storage is not provided, and bikes must be brought home at the end of each day.

5 Day Resident Fee: \$205

4 Day Resident Fee: \$165

♥ Extended Care available at SSPS (weeks 2 to 7) or RYC (week 8)



Click here to register online

TENNIS & COURT SPORTS

Ages 6 – 8 Years (Jr) & 9 – 12 Years (Sr)

📍 **Stuart Scott Public School**

Get ready to serve up some fun with a game of tennis and other court sports! Half of the camp day will be spent on the tennis courts improving their forehand, backhand, serve and volleys through drills and matches. The camp will switch things up in the afternoon by exploring a variety of court sports, including basketball, volleyball, pickleball, badminton, handball, futsal and floorball! Campers will learn the rules and techniques of each sport, enjoy three recreational swims and be joined by tennis instructors from Newmarket's very own Kieth Davis Tennis Centre each week. Participants must bring their own tennis racket.

5 Day Resident Fee: \$205

4 Day Resident Fee: \$165

♥ Extended Care available at SSPS



ULTIMATE FRISBEE CAMP

Ages 9 – 14 Years

📍 **Armitage Village Public School**

Delivered in partnership with Toronto Rush

Learn from professional players and coaches from the Toronto RUSH! Coaches will also include elite Women's players from the GTA. Campers will learn the rules of Ultimate Frisbee and enjoy scrimmage games 4X4. Other skills learned include gripping the disc, forehand throws, backhand throws, catching the disc, cutting and creating space, small area games and distance throwing. No Extended Care available for this camp.

Resident Fee: \$261

♥ No Extended Care available

Camps Index

Leadership Camps

COUNSELLOR IN TRAINING

Ages 13 – 16 Years

📍 **Crossland Public School**

Are you interested in preparing to become a successful camp counsellor? In this course, you will learn about program planning, games and resources, behaviour management strategies and more. Standard First Aid and CPR-C, Safeguard, and HIGH FIVE: Principles of Healthy Child Development certifications included. This course includes a 2-week in class portion, followed by a volunteer placement for successful candidates at a Town of Newmarket Summer Camp. Placements will be coordinated on site with the Camp Director. Note: there are no prerequisites for this course.

10 Day Resident Fee: \$465

9 Day Resident Fee: \$419

♥ No Extended Care available

JUNIOR FIREFIGHTER

Ages 8 – 11 Years

📍 **Ray Twinney Recreation Complex**

In partnership with the Central York Fire Services, this one-week camp introduces participants to the world of firefighting! Each day will be designated to a different topic of fire safety and prevention, such as basic first aid and fire extinguisher training. It is designed for campers to get hands-on experience on what it is like to be a firefighter, in a safe environment, through a variety of team building exercises, leadership activities, active games, fire escape challenges, and more! Throughout the week, campers will take daily trips to the local fire station and work as a team towards developing a fire safety education presentation for the community.

Resident Fee: \$220

♥ Extended Care available at RTRC



Click here to register online

JUNIOR LIFEGUARD

Ages 10 – 12 Years

📍 **Magna Centre**

Dive into the exciting world of lifeguarding at this one-week camp! Improve your skills, your strokes, make new friends, get fit and have fun! Jr Lifeguard emphasizes improving overall fitness and endurance along with promoting teamwork, leadership, and lifesaving knowledge through fun aquatic lifesaving-based activities. Throughout the week, campers will work with their teammates to develop a water safety community education project. Swimmers must be able to swim 25m of the pool and be comfortable in deep water.

Resident Fee: \$232.50

♥ Extended Care available at MC



JUNIOR VETERINARIANS

Ages 10 – 12 Years

📍 **Old Town Hall**

In partnership with the Ontario SPCA & Humane Society, campers will be introduced to the life of a veterinarian! Campers will enjoy daily special guest visits from where they will learn about caring for animals and their well-being, understanding animal's emotions, and meet live animals! Throughout the week, Junior Veterinarians will work as a team to develop animal advocacy presentations and create animal toys to be donated to the Humane Society at the end of the week. Campers will graduate the course as an Animal Advocate and receive a certification of completion.

Resident Fee: \$174.20

♥ Extended Care available at CCLH

Camps Index

LEADER IN TRAINING

Ages 10 – 12 Years

📍 Ray Twinney Recreation Complex

Step up and make a difference! This one-week course empowers Leaders in Training (LITs) to develop essential leadership skills, while introducing them to the world of camps. Through fun, hands-on activities and real-life projects, LITs will learn about problem solving, professionalism, inclusion, communication and teamwork – core skills that will set them up for success at camp and beyond! They'll also explore topics such as, conflict resolution, goal setting, action planning and leading younger campers. Throughout the week, Leaders in Training will work as a group to put on a Mini-Event for Town of Newmarket Camps to attend at the end of the week.

There is no placement.

Resident Fee: \$216.50

♥ Extended Care available at RTRC

MEDICS CAMP: EXPLORE

Ages 10 – 12 Years

📍 Old Town Hall

Delivered in partnership with Medics Camp

Explore the world of medical science, health, and the human body. In this unique version of Medics Camp we will explore the nervous system, how the brain works, mental health, and veterinary medicine. We will take a journey beginning in your mouth where you smell and taste your food and then follow the food as it goes through your digestive system. Medics will even be making poop! (not real of course) We will deep dive into how our eyes and ears work and use our doctor skills to test our senses, learn sign language and read braille. Skin is the largest organ in the body. Medics will learn about it and the sense of touch, types of anesthesia and then practice their surgical skills. Friday is first aid day where basic life skills are learned.

Resident Fee: \$395

♥ Extended Care available at CCLH



**Click here to
register online**

Camps Index

Summer Camp Volunteer Training

Interested in building your experience for future employment?

Want to make a difference in your community?

Looking to help make summer camp a fun and inclusive place for all?

The Town of Newmarket has a free Summer Camp Volunteer Training for youth looking to gain experience working with children and developing their leadership skills!

- **When:** Tuesday June 3, 2025 from 4:30 to 8:30 p.m.
- **Where:** Community Centre & Lions Hall
- **How to Register:** Use barcode **50938** to register through your newmarket.perfectmind.com account!

Successful candidates will be contacted regarding their one-week camp placement following the course and can use these hours towards their high school volunteer hours! Successful candidates are those that are actively listening and engaged during the entirety of the course, respectful towards other participants and the instructor, and show an interest in the volunteer position. Please come to class with the Volunteer Application filled out. This will be sent to participants prior to the course via email.

Volunteers must be 14 years of age or older by the start of the course.

Looking for additional volunteer hours, more information on becoming a Town of Newmarket camp staff, and ALL certifications needed to work camps? Check out our Counsellor in Training course on page 35 for this amazing opportunity!



Adapted Camps



Adapted Camps are specifically designed programs for campers with disabilities. These camps will feature small staff to participant ratios (1:3), smaller group sizes, a sensory aware environment, and specifically designed programming to meet the needs of all campers.

CAMP OHANA

Ages 13 – 19 Years

📍 **Community Centre & Lions Hall**

Come join us in this adapted camp specifically designed for youth with disabilities and unique needs. At Camp Ohana, each camper's strengths and abilities will be highlighted through adapted play activities with a focus on fostering independence, encouraging friendships, and building social skills. Campers will enjoy both passive and active games, daily outdoor walks, water play and swimming, and a featured special guest. A 1:3 staff to participant ratio will be provided. Campers unable to participate in a 1:3 ratio and requiring 1:1 support must register into Inclusion 1:1 Support.

5 Day Fee: \$290

4 Day Fee: \$233

3 Day Fee: \$176

♥ **Extended Care available at CCLH**



**Click here to
register online**

ENDLESS ADVENTURE

Ages 4 – 6 Years

📍 **Community Centre & Lions Hall**

Endless Adventure is a thoughtfully designed camp created to support the unique needs of preschool-aged children with disabilities. Our program offers a welcome, safe and nurturing environment where children can explore, learn and grow through a variety of sensory-rich and developmentally appropriate activities. Every child has the opportunities to engage in meaningful and joyous experiences, allowing them to explore new challenges while being supported in a way that respects their unique pace and abilities. Whether it's through hands-on crafts, interactive games or group activities, Endless Adventure ensures that each child enjoys a fun, enriching experience everyday. A 1:3 staff to participant ratio will be provided. Campers unable to participate in a 1:3 ratio and requiring 1:1 support must register into Inclusion 1:1 Support.

5 Day Fee: \$290

♥ **Extended Care available at CCLH**

Camps Index

SENSE-SATIONAL

Ages 6 – 12 Years

📍 Community Centre & Lions Hall

In this adapted camp for children with disabilities, campers will have the opportunity to explore all their five senses in an engaging and supported way. Participants will spend time connecting with nature, expelling energy and engaging in traditional camp activities and games. This camp will also feature water play/swimming, outdoor picnics, crafting, dancing, adventures to the park and a featured special guest. A 1:3 staff to participant ratio will be provided. Campers unable to participate in a 1:3 ratio and requiring 1:1 support must register into Inclusion 1:1 Support.

5 Day Fee: \$290

4 Day Fee: \$233

3 Day Fee: \$176

♥ Extended Care available at CCLH



Click here to
register online



The Town of Newmarket offers 1:1 Inclusion Facilitators to assist campers with disabilities. More information on how to request a 1:1 support staff can be found on pages 12 & 13 of this guide.

[Camps Index](#)

Summer Camp Chart

Camp	Location	Age	Weeks Available								
Art Attack	MC	6 to 9	1	2	3	4	5	6	7	8	9
Art Studio	OTH	9 to 13	1	2	3	4	5	6	7	8	9
Aussie X	AVPS	6 to 9	1	2	3	4	5	6	7	7	9
Badminton & Pickleball	DPS	7 to 10	1	2	3	4	5	6	7	8	9
Basketball Camp	CLPS	8 to 12	1	2	3	4	5	6	7	8	9
Camp Extreme	MC	9 to 12	1	2	3	4	5	6	7	8	9
Camp OHANA	CCLH	13 to 19	1	2	3	4	5	6	7	8	9
Camp Newlaka	CCLH	5 to 7	1	2	3	4	5	6	7	8	9
Camp Quest	RYC	8 to 12	1	2	3	4	5	6	7	8	9
Cooking Camp	RYC	6 to 12	Jr	Sr	Jr	Sr	Jr	Sr	Jr	Sr	9
Counsellor in Training	CRPS	13 to 16	1	2-3	4-5	6-7	8	9			
Creative Campers	CRPS	4 to 6	1	2	3	4	5	6	7	8	9
Endless Adventure	CCLH	4 to 6	1	2	3	4	5	6	7	8	9
Engineering for Kids	DPS	4 to 12	1	2	3	4	5	6	7	8	9
Envi-Sci	CCLH	7 to 10	1	2	3	4	5	6	7	8	9
Film Camp in a Box	SSPS	8 to 14	1	2	3	4	5	6	7	8	9
Glee Camp	NRPAC	6 to 12	1	Jr	3	4	Jr	Sr	7	8	9
Hockey Camp	MC	6 to 12	1	Jr	Jr	Sr	Jr	Jr	Sr	Jr	9
Junior Firefighter	RTRC	8 to 11	1	2	3	4	5	6	7	8	9
Junior Lifeguard	MC	10 to 12	1	2	3	4	5	6	7	8	9

TUC - Trinity United Church CCLH - Community Centre & Lions Hall MC - Magna Centre
 RYC - Recreation Youth Centre & telMAX Indoor Skate Park MLPS - Maple Leaf public School
 DPS - Denne Public School

Summer Camp Chart

Camp	Location	Age	Weeks Available								
Junior Veterinarians	OTH	10 to 12	1	2	3	4	5	6	7	8	9
Karate Camp	AVPS	6 to 11	1	2	3	4	5	6	7	8	9
Kids Great Minds	AVPS	6 to 12	1	2	3	4	5	6	7	8	9
Kids on the Move	CLPS	4 to 12	1	2	3	4	5	6	7	8	9
Kids Place Camp	RTRC	4 to 8	1	2	3	4	5	6	7	8	9
Last Blast: Kids Place	RTRC	4 to 12	1	2	3	4	5	6	7	8	9
Leader in Training	RTRC	10 to 12	1	2	3	4	5	6	7	8	9
Mad Science	AVPS	4 to 12	1	2	3	4	5	6	7	8	9
Medics Camp	OTH	9 to 12	1	2	3	4	5	6	7	8	9
Mini Adventures	TFPS	4 to 6	1	2	3	4	5	6	7	8	9
Minor Leaguers	MC	4 to 5	1	2	3	4	5	6	7	8	9
Move It!	OTH	4 to 12	1	Sr	Jr	M	Sr	Jr	M	Jr	9
Off To The Olympics	DPS	4 to 6	1	M	Jr	4	5	6	Jr	M	9
Outdoor Sports Sr	RTRC	9 to 12	1	2	3	4	5	6	7	8	9
Outta Townerz	MC	9 to 12	1	2	3	4	5	6	7	8	9
Robothink	DPS	5 to 12	1	2	3	4	5	6	7	8	9
SENSE-Sational	CCLH	6 to 12	1	2	3	4	5	6	7	8	9
Skate & Scooter Jr	RYC	6 to 12	Jr	Jr	Sr	Jr	Jr	Jr	Sr	Jr	Jr
Soccer Camp	NSC	7 to 12	1	Jr	Int	Jr	Int	6	7	8	9
Sports Camp Jr	MC	6 to 8	1	2	3	4	5	6	7	8	9

DPS - Denne Public School CCLH - Community Centre & Lions Hall SSPS - Stuart Scott Public School
 NRPAC - New Roads Performing Arts Centre MC - Magna Centre RTRC - Ray Twinney Recreation Complex
 AVPS - Armitage Village Public School

Summer Camp Chart

Summer Sizzlers	CLPS	4 to 8	1	2	3	4	5	6	7	8	9	
Swim Camp	RTRC	6 to 12	Jr 2 Wk	Jr 2 Wk	Jr 2 Wk	Jr 2 Wk	Jr 2 Wk	Jr 2 Wk	Jr 2 Wk	Jr 2 Wk	9	
Swim Camp	MC	6 to 12	Sr 2 Wk	Jr 2 Wk	5	6	Jr 2 Wk	Jr 2 Wk	Jr 2 Wk	Jr 2 Wk	9	
Swimcycle	SSPS	6 to 12	1	Sr	Jr	Sr	Jr	Sr	Jr	Jr	8	9
Swimcycle	RYC	9 to 12	1	2	3	4	5	6	7	Sr	9	
Tennis & Court Sports	SSPS	6 to 12	1	Jr	Sr	Jr	Sr	Jr	Jr	Jr	8	9
Theatre Camp	NRPAC	6 to 8	1	2	Jr 2 Wk	Jr 2 Wk	5	6	Jr 2 Wk	Jr 2 Wk	9	
Ultimate Frisbee	AVPS	9 to 14	1	2	3	4	5	6	7	8	9	

SSPS - Stuart Scott Public School MLPS - Maple Leaf public School
 RTRC - Ray Twinney Recreation Complex AVPS - Armitage Village Public School





SUMMER CAMP PLANNER

Use the Summer Camp Planner to help you organize a fun and unforgettable summer!



Summer Camp Planner

Name of Camper:

Dates	Camp Name	Camp Code	Location	Extended Care	Total Cost
Week 1: July 2 to 4				a.m. p.m.	
Week 2: July 7 to 11				a.m. p.m.	
Week 3: July 14 to 18				a.m. p.m.	
Week 4: July 21 to 25				a.m. p.m.	
Week 5: July 28 to Aug 1				a.m. p.m.	
Week 6: Aug 5 to 8				a.m. p.m.	
Week 7: Aug 11 to 15				a.m. p.m.	
Week 8: Aug 18 to 22				a.m. p.m.	
Week 9: Aug 25 to 29				a.m. p.m.	
Total Cost:					

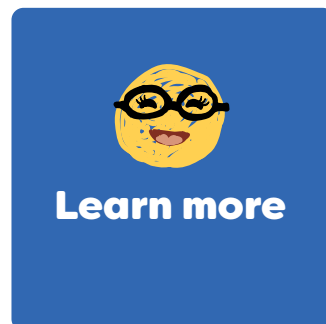
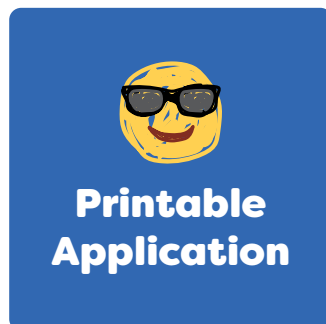
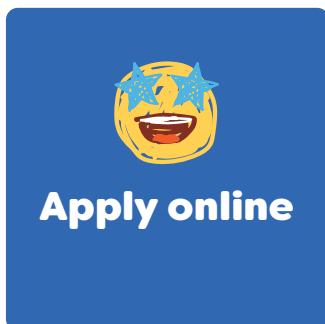


Creating Accessible Recreation for Everyone

The Town of Newmarket's Care Fund is now available. Give the gift of recreation by donating to the Care Fund today.

The Town of Newmarket aims to “Create Accessible Recreation for Everyone” by offering financial assistance to residents of all ages on any Town of Newmarket Recreation & Culture registered programs. The objective of this program is to offer increased opportunities to those who may require financial assistance that would not otherwise be able to participate in recreation.

Click the buttons below to Apply or Donate to care.



Subsidy Information

Local Charities

Canadian Tire Jumpstart®

Canadian Tire Jumpstart® is a community-based charitable program that helps kids aged 4 to 18 participate in organized sports and recreation such as hockey, dance, soccer and swimming, so they can develop important life skills, self-esteem and confidence.

Eligible – Newmarket Residents between the ages of 4 to 18

Criteria – Application + must demonstrate need for financial assistance with provision of proof of receiving subsidy (EI, OW, OH, GTRI, ODSP)

Frequency – Twice per annum (Jan-June and July-Dec)

Amount – Eligible 100% up to maximum of \$200

Contact – 905-895-5193 ext. 2705 Canadian Tire Jumpstart® - Newmarket Chapter
– Contact 905-895-5193 or ctjs@newmarket.ca

York Region Subsidy Programs

York Region offers various types of subsidies for families with low to moderate income.

For more information on programs and eligibility, please visit www.york.ca/children or contact ACCESS YORK AT 1(877) 464-9675.

York Region does not guarantee funding or space in programs or camps.



Town of
Newmarket
amps

